



شركة الاستثمار الوطنية
NATIONAL INVESTMENTS COMPANY

Bursa Kuwait – Daily Market Report MENA Securities – Research & Studies Dep.

04th October 2022



www.nic.com.kw

DAILY MARKET COVERAGE REPORT

NIC MENA SECURITIES - RESEARCH AND STUDIES DEP



Kuwait Market Watch

Tuesday, October 4, 2022

Index	Close	DTD Chg Net	DTD (%)	YTD (%)	52W High	52W Low	MKT CAP Bn (KD)	PBV (X)	PE (X)	DY (%)
All Share Index	7,186.53	204.55	2.93%	2.04%	8,472.15	6,788.83	45.94	1.96	30.86	4.12
Premier Index	8,048.13	250.96	3.22%	5.35%	9,437.37	7,343.90	36.94	2.16	31.76	4.53
Main Index	5,377.55	93.07	1.76%	-8.64%	6,600.62	5,190.37	9.00	1.17	27.15	2.45
NIC 50 Index	9,005.15	257.67	2.95%	5.66%	10,553.82	8,195.69	36.24	2.16	31.76	4.53

Index	Value Mn(KD)	Volume (Mn share)
All Share Index	77.61	295.84
Premier Index	61.74	121.30
Main Index	15.86	174.54
NIC 50 Index	72.85	225.17

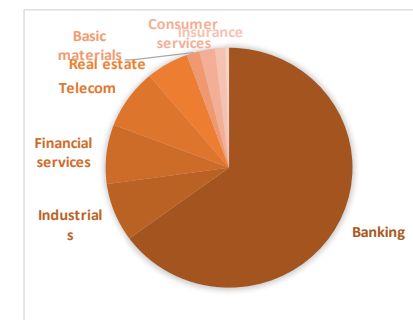
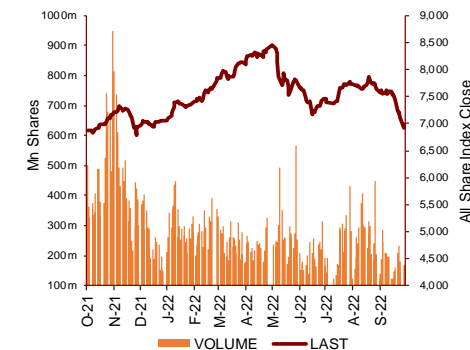
Today's Top 5 Gainer %	Close KD	Value KD	DTD (%)
Inovest BSC Public	0.086	111,890	14.40%
National Mobile Telecommunicat	1.000	108,294	11.11%
Gulf Cable and Electrical Indu	1.112	657,302.899	10.43%
Livestock Transport and Tradin	0.126	3	9.57%
Ektitab Holding	0.012	27,850.792	9.43%

Today's Top 5 by Value	Close KD	Trade Val Mn(KD)	DTD (%)
Kuwait Finance House	0.833	22.51	4.39%
Agility Public Warehousing	0.700	10.45	4.63%
National Bank of Kuwait	1.010	6.37	3.80%
National Consumer Holding	0.113	4.90	7.62%
National Industries Group Hold	0.233	4.45	3.10%

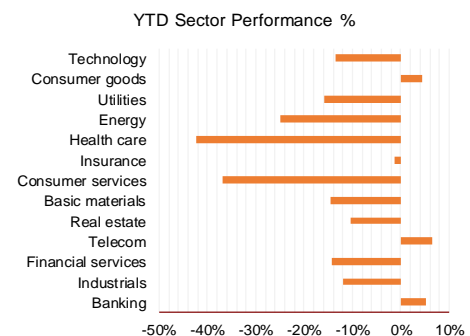
Market Breadth	UP	Down	No Chg
All Share Index	95	29	31
Premier Index	24	1	1
Main Index	71	28	30
NIC 50 Index	43	7	0

Today's Top 5 Loser %	Close KD	Value KD	DTD (%)
Aqar Real Estate Investmer	0.055	1,171	-8.09%
United Real Estate	0.073	46,270	-6.69%
UniCap Investment and Fin:	0.054	21,986	-6.59%
Real Estate Trade Centers	0.054	9,852	-5.57%
Kuwait Real Estate Holding	0.035	183	-4.86%

Top 5 by Volume	Close KD	Trade Vol Mn(Shrs)	DTD (%)
National Consumer Holding	0.113	43.57	7.62%
Kuwait Finance House	0.833	27.27	4.39%
GFH Financial Group	0.079	22.41	4.07%
National Industries Group H	0.233	18.89	3.10%
Jiyad Holding	0.028	18.50	7.34%



Sector	Close	DTD Chg Net	DTD (%)	YTD (%)	52W High	52W Low	MKT CAP Bn (KD)	PBV (X)	PE (X)	DY (%)
Banking	1,761.12	54.210	3.18%	5.2%	1,992.2	1,552.3	29.458	1.58	23.95	1.92
Industrials	1,042.25	36.250	3.60%	-11.9%	1,443.6	976.3	3.560	1.00	19.61	3.91
Financial services	1,260.96	39.800	3.26%	-14.2%	1,678.3	1,190.4	3.625	0.97	29.88	3.09
Telecom	1,191.76	31.810	2.74%	6.5%	1,514.7	1,055.9	3.647	1.31	13.35	3.00
Real estate	1,212.93	24.350	2.05%	-10.4%	1,438.0	1,155.8	2.533	0.70	35.45	1.38
Basic materials	879.07	3.020	0.34%	-14.5%	1,233.3	846.0	0.766	1.25	9.24	6.04
Consumer services	477.65	16.850	3.66%	-37.0%	792.7	449.8	0.925	2.27	28.22	1.76
Insurance	1,520.36	5.130	0.34%	-1.2%	1,675.7	1,430.3	0.606	0.82	45.81	5.37
Health care	459.73	0.000	0.00%	-42.3%	821.7	420.4	0.228	15.73	12.57	0.96
Energy	1,088.42	16.890	1.58%	-25.0%	1,592.9	975.7	0.220	0.82	21.45	2.26
Utilities	507.89	2.630	0.52%	-15.8%	650.0	500.0	0.212	2.16	14.70	9.38
Consumer goods	1,396.12	-0.300	-0.02%	4.5%	1,641.0	1,117.6	0.145	0.90	38.01	2.12
Technology	588.55	-3.630	-0.61%	-13.4%	843.9	539.1	0.008	0.72	NM	-
	7,186.53	204.55	2.93%	2.0%	8,472.2	6,788.8	45.94	1.96	30.86	4.12



DAILY MARKET COVERAGE REPORT

NIC MENA SECURITIES - RESEARCH AND STUDIES DEP

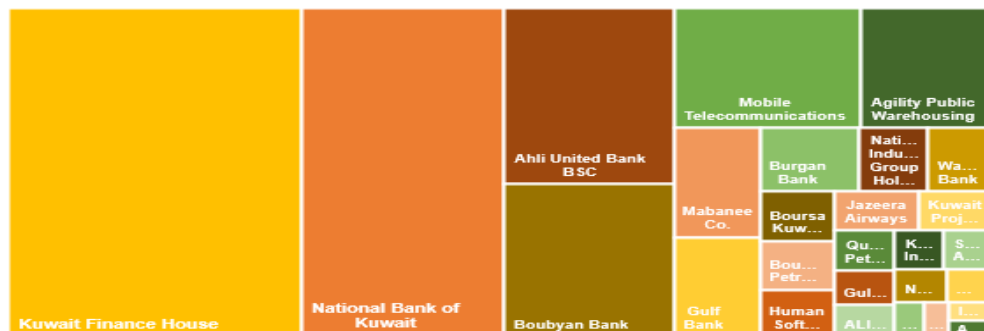


Premier Market

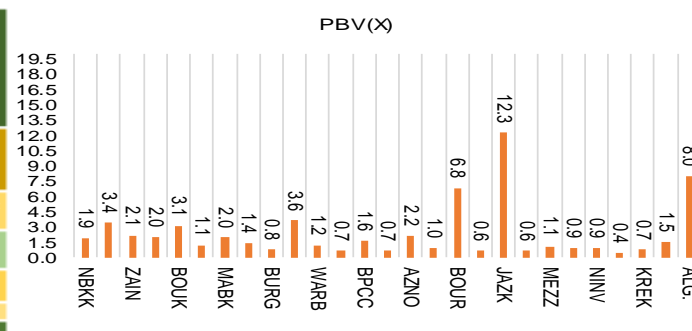
Tuesday, October 4, 2022

Premier Market	Price			Valuation Multiples			MKT Cap	Price Performance		Trading Indicators		ROE	ROA	52 Week (KD)		MKT Cap
	Close (KD)	Day Δ	Day % Δ	PBV(X)	PE(X)	DY%	Mn KD	MTD(%)	YTD (%)	Value (Mn KD)	(Mn Shrs)	(%)	(%)	High	Low	%
National Bank of Kuwait	1.010	0.037	3.80%	1.89	17.59	2.50	7,628	0%	6%	6.37	6.38	10.9%	1.4%	1.104	0.890	20.77%
Kuwait Finance House	0.833	0.035	4.39%	3.42	27.10	1.37	11,022	-1%	10%	22.51	27.27	12.8%	1.6%	1.039	0.720	30.02%
Mobile Telecommunications	0.594	0.007	1.19%	2.14	13.87	5.62	2,570	-2%	0%	3.18	5.37	15.6%	4.3%	0.698	0.564	7.00%
Ahli United Bank BSC	0.305	0.000	0.00%	2.04	17.93	2.72	3,400	0%	21%	0.00	0.00	11.3%	1.6%	0.336	0.240	9.26%
Boubyan Bank	0.792	0.022	2.86%	3.11	50.76	0.59	2,961	0%	11%	1.83	2.34	6.7%	0.8%	0.965	0.681	8.06%
Agility Public Warehousing	0.700	0.031	4.63%	1.14	51.38	2.49	1,768	0%	-11%	10.45	14.89	2.7%	2.2%	1.062	0.634	4.81%
Mabane Co.	0.870	0.014	1.64%	1.95	18.11	1.54	1,080	0%	16%	0.69	0.80	11.2%	5.4%	0.910	0.715	2.94%
Gulf Bank	0.311	0.012	4.01%	1.40	16.92	2.23	985	0%	17%	2.35	7.64	8.5%	0.8%	0.385	0.224	2.68%
Burgan Bank	0.221	0.008	3.76%	0.78	18.04	2.24	725	0%	-8%	0.57	2.59	4.3%	0.7%	0.307	0.205	1.98%
Human Soft Holding	3.300	0.035	1.07%	3.61	7.54	12.25	401	0%	2%	0.97	0.29	48.7%	39.9%	3.704	3.006	1.09%
Warba Bank	0.230	0.008	3.60%	1.21	26.30	0.00	460	0%	-16%	2.82	12.26	4.8%	0.6%	0.298	0.216	1.25%
Qurain Petrochemical Industries	0.264	0.001	0.38%	0.65	10.06	6.84	283	0%	-24%	0.21	0.79	6.4%	5.2%	0.403	0.255	0.77%
Boubyan Petrochemical	0.806	0.003	0.37%	1.64	9.08	7.47	420	0%	-5%	0.21	0.26	19.1%	10.1%	1.125	0.769	1.14%
Kuwait Projects Company Holding	0.130	0.007	5.69%	0.65	315.38	4.07	318	0%	-8%	0.50	3.92	0.2%	0.1%	0.215	0.118	0.87%
Shamal Az-Zour Al-Oula Power & Water	0.193	0.001	0.52%	2.16	14.70	9.38	212	0%	-15%	0.15	0.78	19.1%	2.9%	0.247	0.190	0.58%
National Industries Group Holding	0.233	0.007	3.10%	0.95	5.20	4.92	502	0%	-3%	4.45	18.89	15.2%	6.5%	0.314	0.202	1.37%
Boursa Kuwait Securities Co	2.110	0.139	7.05%	6.79	21.08	3.30	424	0%	4%	0.27	0.13	33.9%	22.2%	2.870	1.800	1.15%
Kuwait International Bank	0.203	0.006	3.05%	0.62	31.32	1.95	215	0%	-3%	0.65	3.23	1.9%	0.4%	0.259	0.192	0.59%
Jazeera Airways	1.681	-0.017	-1.00%	12.27	13.73	2.71	370	0%	30%	0.88	0.51	164.8%	12.1%	2.099	0.829	1.01%
Alafco Aviation Lease and Finance	0.174	0.003	1.75%	0.63	NM	0.00	166	0%	-20%	0.06	0.34	-15.9%	-3.4%	0.256	0.167	0.45%
Mezzan Holding	0.380	0.009	2.43%	1.09	38.01	4.23	118	0%	-34%	0.40	1.05	2.8%	1.3%	0.632	0.358	0.32%
Gulf Cable and Electrical Industries	1.112	0.105	10.43%	0.93	9.34	5.96	231	0%	28%	0.66	0.61	11.0%	NM	1.850	0.826	0.63%
National Investments	0.242	0.015	6.61%	0.90	8.49	19.82	193	0%	11%	0.25	1.05	10.9%	8.9%	0.475	0.188	0.53%
Alimtiiaz Investment Group	0.076	0.004	5.98%	0.42	NM	12.52	78	0%	-35%	0.04	0.54	-1.0%	-0.1%	0.142	0.069	0.21%
Kuwait Real Estate	0.105	0.004	4.17%	0.74	12.28	2.89	97	0%	-40%	0.90	8.57	6.0%	2.5%	0.187	0.097	0.26%
Integrated Holding	0.362	0.004	1.12%	1.48	27.37	2.79	92	-5%	-2%	0.23	0.62	5.4%	3.4%	0.478	0.351	0.25%
ALI ALGanim	0.797	0.003	0.38%	7.97	12.45	0.00	221	2%	nm	0.16	0.20	27.8%	10.9%	0.966	0.750	0.60%
Total		250.96	3.22%	2.16	31.76	4.53	36,721	1.2%	5.4%	61.74	121.10					101%

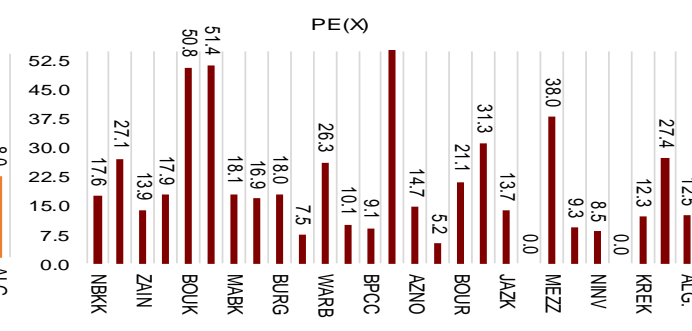
Market Capitalization



Price to Book Value



Price to Earning Value

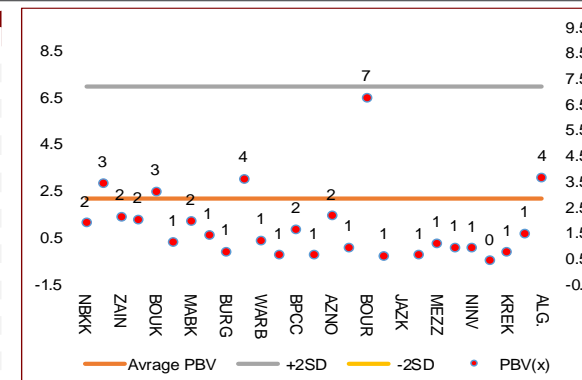


DAILY MARKET COVERAGE REPORT

NIC MENA SECURITIES - RESEARCH AND STUDIES DEP



Premier Market Company	Price			Valuation Multiples			MKT Cap Mn KD	Price Performance		ROE (%)	ROA (%)
	Close (KD)	Day Δ	Day % Δ	PBV(X)	PE (X)	DY%		MTD (%)	YTD (%)		
National Bank of Kuwait	1.010	0.037	3.80%	1.89	17.6	2.50	7,628	0.0%	6.4%	10.9%	1.4%
Kuwait Finance House	0.833	0.035	4.39%	3.42	27.1	1.37	11,022	-1.2%	10.1%	12.8%	1.6%
Mobile Telecommunications	0.594	0.007	1.19%	2.14	13.9	5.62	2,570	-1.5%	-0.2%	15.6%	4.3%
Ahli United Bank BSC	0.305	0.000	0.00%	2.04	17.9	2.72	3,400	0.0%	20.7%	11.3%	1.6%
Boubyan Bank	0.792	0.022	2.86%	3.11	50.8	0.59	2,961	0.0%	11.2%	6.7%	0.8%
Agility Public Warehousing	0.700	0.031	4.63%	1.14	51.4	2.49	1,768	0.0%	-11.1%	2.7%	2.2%
Mabane Co.	0.870	0.014	1.64%	1.95	18.1	1.54	1,080	0.0%	16.3%	11.2%	5.4%
Gulf Bank	0.311	0.012	4.01%	1.40	16.9	2.23	985	0.0%	17.0%	8.5%	0.8%
Burgan Bank	0.221	0.008	3.76%	0.78	18.0	2.24	725	0.0%	-7.5%	4.3%	0.7%
Human Soft Holding	3.300	0.035	1.07%	3.61	7.5	12.25	401	-0.1%	2.4%	48.7%	39.9%
Warba Bank	0.230	0.008	3.60%	1.21	26.3	0.00	460	0.0%	-16.1%	4.8%	0.6%
Qurain Petrochemical Industries	0.264	0.001	0.38%	0.65	10.1	6.84	283	0.0%	-23.9%	6.4%	5.2%
Boubyan Petrochemical	0.806	0.003	0.37%	1.64	9.1	7.47	420	0.0%	-5.4%	19.1%	10.1%
Kuwait Projects Company Holding	0.130	0.007	5.69%	0.65	315.4	4.07	318	0.0%	-8.5%	0.2%	0.1%
Shamal Az-Zour Al-Oula Power & Water	0.193	0.001	0.52%	2.16	14.7	9.38	212	0.0%	-15.4%	19.1%	2.9%
National Industries Group Holding	0.233	0.007	3.10%	0.95	5.2	4.92	502	0.0%	-3.3%	15.2%	6.5%
Boursa Kuwait Securities Co	2.110	0.139	7.05%	6.79	21.1	3.30	424	0.0%	4.5%	33.9%	22.2%
Kuwait International Bank	0.203	0.006	3.05%	0.62	31.3	1.95	215	0.0%	-3.2%	1.9%	0.4%
Jazeera Airways	1.681	-0.017	-1.00%	12.27	13.7	2.71	370	0.0%	30.3%	164.8%	12.1%
Alafco Aviation Lease and Finance	0.174	0.003	1.75%	0.63	NM	0.00	166	0.0%	-20.2%	-15.9%	-3.4%
Mezzan Holding	0.380	0.009	2.43%	1.09	38.0	4.23	118	0.0%	-34.2%	2.8%	1.3%
Gulf Cable and Electrical Industries	1.112	0.105	10.43%	0.93	9.3	5.96	231	0.0%	27.7%	11.0%	9.0%
National Investments	0.242	0.015	6.61%	0.90	8.5	19.82	193	0.0%	10.5%	10.9%	8.9%
Alimtiq Investment Group	0.076	0.004	5.98%	0.42	NM	12.52	78	0.0%	-35.4%	-1.0%	-0.1%
Kuwait Real Estate	0.105	0.004	4.17%	0.74	12.3	2.89	97	0.0%	-39.6%	6.0%	2.5%
Integrated Holding	0.362	0.004	1.12%	1.48	27.4	2.79	92	-4.7%	-2.2%	5.4%	3.4%
ALI ALGanim	0.797	0.003	0.38%	3.67	12.5	0.00	221	1.5%	nm	27.8%	10.9%
Total	250.96	3.22%	2.16	31.76	4.53	36,721	1.2%	5.4%			



Premier Market Discription	Price			Moving Average		RSI 14 Day	MKT Cap Mn KD	Price Performance		52 Week (KD)	
	Close (KD)	Day Δ	Day % Δ	50 Day	200 Day			MTD (%)	YTD (%)	High	Low
Premier Index	8,048	250.96	3.22%	8,480	8,411	23	36,721	1.2%	5.3%	9,437	7,344

Top 5 Performrs (Today's Price Change)

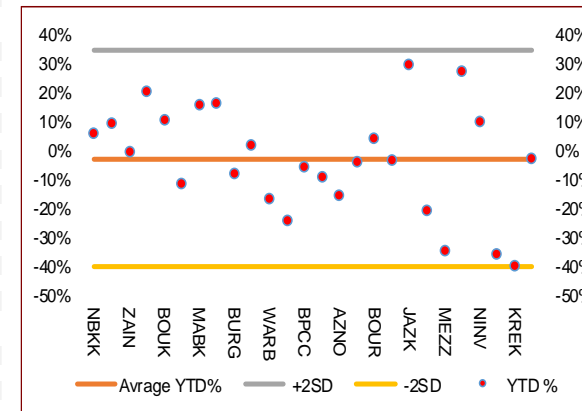
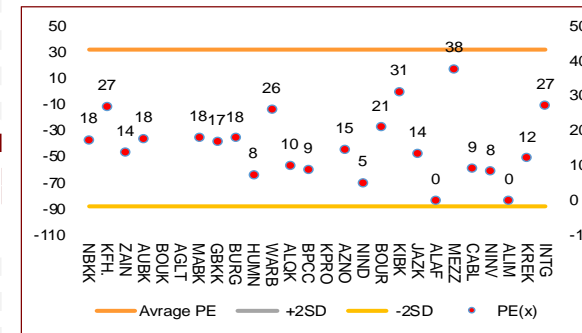
Gulf Cable and Electrical Industries	1.112	0.105	10.43%	1.386	1.309	26	231	0.0%	27.7%	1.850	0.826
Boursa Kuwait Securities Co	2.110	0.139	7.05%	2.327	2.355	34	424	0.0%	4.5%	2.870	1.800
National Investments	0.242	0.015	6.61%	0.287	0.313	28	193	0.0%	10.5%	0.475	0.188
Alimtiq Investment Group	0.076	0.004	5.98%	0.090	0.111	27	78	0.0%	-35.4%	0.142	0.069
Kuwait Projects Company Holding	0.130	0.007	5.69%	0.152	0.164	21	318	0.0%	-8.5%	0.215	0.118

Middel Performrs (Today's Price Change)

Agility Public Warehousing	0.700	0.031	4.63%	0.820	0.862	27	1,768	0.0%	-11.1%	1.062	0.634
Kuwait Finance House	0.833	0.035	4.39%	0.880	0.870	33	11,022	-1.2%	10.1%	1.039	0.720
Kuwait Real Estate	0.105	0.004	4.17%	0.123	0.151	27	97	0.0%	-39.6%	0.187	0.097
Gulf Bank	0.311	0.012	4.01%	0.342	0.315	34	985	0.0%	17.0%	0.385	0.224
National Bank of Kuwait	1.010	0.037	3.80%	1.045	1.027	38	7,628	0.0%	6.4%	1.104	0.890
Burgan Bank	0.221	0.008	3.76%	0.236	0.254	30	725	0.0%	-7.5%	0.307	0.205
Warba Bank	0.230	0.008	3.60%	0.244	0.264	30	460	0.0%	-16.1%	0.298	0.216
National Industries Group Holding	0.233	0.007	3.10%	0.265	0.260	26	502	0.0%	-3.3%	0.314	0.202
Kuwait International Bank	0.203	0.006	3.05%	0.212	0.220	34	215	0.0%	-3.2%	0.259	0.192
Boubyan Bank	0.792	0.022	2.86%	0.100	0.100	38	2,961	0.0%	11.2%	1.210	0.996
Mezzan Holding	0.380	0.009	2.43%	0.414	0.511	21	118	0.0%	-34.2%	0.632	0.358
Alafco Aviation Lease and Finance	0.174	0.003	1.75%	0.192	0.207	25	166	0.0%	-20.2%	0.256	0.167
Mabane Co.	0.870	0.014	1.64%	0.836	0.806	52	1,080	0.0%	16.3%	0.910	0.715
Mobile Telecommunications	0.594	0.007	1.19%	0.603	0.611	47	2,570	-1.5%	-0.2%	0.698	0.564
Integrated Holding	0.362	0.004	1.12%	0.402	0.401	27	92	-4.7%	-2.2%	0.478	0.351

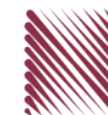
Bottom 5 Performrs (Today's Price Change)

Human Soft Holding	3.300	0.035	1.07%	3.354	3.309	39	401	-0.1%	2.4%	3.704	3.006
Shamal Az-Zour Al-Oula Power & Water	0.193	0.001	0.52%	0.200	0.215	25	212	0.0%	-15.4%	0.247	0.190
Qurain Petrochemical Industries	0.264	0.001	0.38%	0.307	0.351	2	283	0.0%	-23.9%	0.403	0.255
Boubyan Petrochemical	0.806	0.003	0.37%	0.904	0.943	13	420	0.0%	-5.4%	1.125	0.769
Ahli United Bank BSC	0.305	0.000	0.00%	0.305	0.282	50	3,400	0.0%	20.7%	0.336	0.240



DAILY MARKET COVERAGE REPORT

NIC MENA SECURITIES - RESEARCH AND STUDIES DEP



Banking Sector	Price			Valuation Multiples			MKT Cap	Price Performance		Trading Indicators		ROE	ROA	52 Week (KD)		MKT Cap
	Company	Close (KD)	Day Δ	Day % Δ	PBV(X)	PE(X)		DY%	Mn KD	MTD(%)	YTD (%)			Value (Mn KD)	(Mn Shrs)	
National Bank of Kuwait	1.010	0.037	3.80%	1.89	17.59	2.50	7,628	0.0%	6.4%	6.37	6.38	10.9%	1.4%	1.104	0.890	16.60%
Kuwait Finance House	0.833	0.035	4.39%	3.42	27.10	1.37	11,022	-1.2%	10.1%	22.51	27.27	12.8%	1.6%	1.039	0.720	23.99%
Ahli United Bank BSC	0.305	0.000	0.00%	2.04	17.93	2.72	3,400	0.0%	20.7%	0.00	0.00	11.3%	1.6%	0.336	0.240	7.40%
Boubyan Bank	0.792	0.022	2.86%	3.11	50.76	0.59	2,961	0.0%	11.2%	1.83	2.34	6.7%	0.8%	0.965	0.681	6.44%
Commercial Bank of Kuwait	0.491	0.000	0.00%	1.16	12.24	4.07	973	0.0%	-2.0%	0.00	0.00	9.9%	1.9%	0.549	0.466	2.12%
Gulf Bank	0.311	0.012	4.01%	1.40	16.92	2.23	985	0.0%	17.0%	2.35	7.64	8.5%	0.8%	0.385	0.224	2.14%
Burgan Bank	0.221	0.008	3.76%	0.78	18.04	2.24	725	0.0%	-7.5%	0.57	2.59	4.3%	0.7%	0.307	0.205	1.58%
Ahli United Bank	0.263	0.005	1.94%	0.89	23.78	1.85	592	0.0%	-10.6%	0.18	0.70	3.7%	0.7%	0.324	0.250	1.29%
Warba Bank	0.230	0.008	3.60%	1.21	26.30	0.00	460	0.0%	-16.1%	2.82	12.26	4.8%	0.6%	0.298	0.216	1.00%
Al Ahli Bank of Kuwait	0.281	-0.009	-3.10%	0.86	21.45	1.64	498	0.0%	16.2%	0.00	0.02	4.0%	0.6%	0.355	0.211	1.08%
Kuwait International Bank	0.203	0.006	3.05%	0.62	31.32	1.95	215	0.0%	-3.2%	0.65	3.23	1.9%	0.4%	0.259	0.192	0.47%
Total Banking Sector - 11 Companies							29,458			37.29	62.42					64.12%

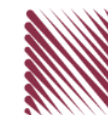
Basic Materials	Price			Valuation Multiples			MKT Cap	Price Performance		Trading Indicators		ROE	ROA	52 Week (KD)		MKT Cap
	Company	Close (KD)	Day Δ	Day % Δ	PBV(X)	PE(X)		DY%	Mn KD	MTD(%)	YTD (%)			Value (Mn KD)	(Mn Shrs)	
Qurain Petrochemical Industries	0.264	0.001	0.38%	0.65	10.06	6.84	283	0.00%	-23.92%	0.21	0.79	6.4%	5.2%	0.403	0.255	0.62%
Boubyan Petrochemical	0.806	0.003	0.37%	1.64	9.08	7.47	420	0.00%	-5.40%	0.21	0.26	19.1%	10.1%	1.125	0.769	0.91%
Al Kout Industrial Projects	0.406	0.000	0.00%	1.45	5.14	9.85	41	0.00%	-18.15%	0.00	0.00	30.5%	20.1%	0.545	0.406	0.09%
Kuwait Foundry	0.298	0.000	0.00%	1.24	12.70	0.00	22	0.00%	-19.24%	0.00	0.00	10.7%	10.3%	0.424	0.260	0.05%
Total Basic Materials - 4 Companies							766			0.42	1.05					1.67%

Consumer Goods	Price			Valuation Multiples			MKT Cap	Price Performance		Trading Indicators		ROE	ROA	52 Week (KD)		MKT Cap
	Company	Close (KD)	Day Δ	Day % Δ	PBV(X)	PE(X)		DY%	Mn KD	MTD(%)	YTD (%)			Value (Mn KD)	(Mn Shrs)	
Mezzan Holding	0.380	0.009	2.43%	1.09	38.01	4.23	118	0.0%	-34.2%	0.40	1.05	2.8%	1.3%	0.632	0.358	0.26%
Livestock Transport and Trading	0.126	0.011	9.57%	0.71	NM	0.00	26	0.0%	-30.8%	0.00	0.00	-14.5%	-8.2%	0.196	0.114	0.06%
Total Consumer Goods - 2 Companies							145			0.40	1.05					0.31%

Consumer Services	Price			Valuation Multiples			MKT Cap	Price Performance		Trading Indicators		ROE	ROA	52 Week (KD)		MKT Cap
	Company	Close (KD)	Day Δ	Day % Δ	PBV(X)	PE(X)		DY%	Mn KD	MTD(%)	YTD (%)			Value (Mn KD)	(Mn Shrs)	
Jazeera Airways	1.681	-0.017	-1.00%	12.27	13.73	2.71	370	0.0%	30.3%	0.88	0.51	164.8%	12.1%	2.099	0.829	0.81%
Kuwait National Cinema	0.890	0.000	0.00%	1.09	8.67	3.37	82	0.0%	0.9%	0.00	0.00	13.3%	6.1%	0.933	0.815	0.18%
Oula Fuel Marketing	0.147	0.002	1.38%	0.90	15.64	3.45	59	1.4%	-5.8%	0.01	0.06	5.6%	2.9%	0.178	0.140	0.13%
Al Soor Fuel Marketing	0.147	-0.003	-2.00%	0.88	19.13	3.33	59	0.0%	-5.2%	0.00	0.03	4.8%	3.6%	0.175	0.142	0.13%
Sultan Center Food Products	0.108	0.000	0.00%	0.62	0.86	0.00	30	0.0%	-48.6%	0.03	0.24	74.2%	12.2%	0.269	0.103	0.07%
Jiyad Holding	0.028	0.002	7.34%	0.30	NM	0.00	5	0.0%	-65.6%	0.52	18.50	-16.2%	-10.9%	0.099	0.015	0.01%
IFA Hotels and Resorts	0.029	0.001	3.57%	3.69	186.67	0.00	18	0.0%	-45.8%	0.32	11.20	2.0%	0.4%	0.073	0.025	0.04%
Kuwait Resorts	0.078	0.004	5.55%	0.48	10.41	3.98	15	0.0%	-19.1%	0.02	0.21	4.8%	4.2%	0.110	0.067	0.03%
Future Kid Entertainment and Real Estate	0.106	0.000	0.00%	0.92	9.27	0.00	12	0.0%	34.7%	0.01	0.07	10.4%	4.7%	0.130	0.074	0.03%
Al Eid Food	0.222	0.008	3.74%	1.69	13.01	3.20	38	0.0%	-3.8%	0.11	0.52	13.5%	10.1%	0.304	0.207	0.08%
Kuwait Hotels	0.178	0.000	0.00%	2.23	20.60	2.81	10	0.0%	154.3%	0.00	0.00	11.1%	7.4%	0.201	0.070	0.02%
Palms Agro Production	0.077	0.000	0.00%	0.78	NM	0.00	4	0.0%	12.3%	0.00	0.00	-13.8%	-10.9%	0.090	0.043	0.01%
ALI ALGanim	0.797	0.003	0.38%	3.67	12.45	0.00	221	1.5%	nm	0.16	0.20	27.8%	10.9%	0.966	0.750	0.48%
Total Consumer Services - 13 Companies							925			2.06	31.53					2.01%

DAILY MARKET COVERAGE REPORT

NIC MENA SECURITIES - RESEARCH AND STUDIES DEP



Financial Services	Price			Valuation Multiples			MKT Cap	Price Performance		Trading Indicators		ROE	ROA	52 Week (KD)		MKT Cap
	Company	Close (KD)	Day Δ	Day % Δ	PBV(X)	PE(X)	DY%	Mn KD	MTD(%)	YTD (%)	Value (Mn KD)	(Mn Shrs)	(%)	(%)	High	Low
Egypt Kuwait Holding	0.380	0.000	0.00%	2.15	5.83	5.62	428	0.0%	-10.4%	0.01	0.03	37.1%	17.5%	0.465	0.360	0.93%
Kuwait Projects Company Holding	0.130	0.007	5.69%	0.65	315.38	4.07	318	0.0%	-8.5%	0.50	3.92	0.2%	0.1%	0.215	0.118	0.69%
National Industries Group Holding	0.233	0.007	3.10%	0.95	5.20	4.92	502	0.0%	-3.3%	4.45	18.89	15.2%	6.5%	0.314	0.202	1.09%
Boursa Kuwait Securities Co	2.110	0.139	7.05%	6.79	21.08	3.30	424	0.0%	4.5%	0.27	0.13	33.9%	22.2%	2.870	1.800	0.92%
GFH Financial Group	0.079	0.003	4.07%	0.89	9.55	4.77	276	0.0%	-19.5%	1.77	22.41	9.3%	1.2%	0.109	0.065	0.60%
National Investments	0.242	0.015	6.61%	0.90	8.49	19.82	193	0.0%	10.5%	0.25	1.05	10.9%	8.9%	0.475	0.188	0.42%
Tamdeen Investment	0.470	-0.005	-1.05%	0.55	12.28	2.11	160	0.0%	24.0%	0.01	0.03	4.9%	3.8%	0.519	0.309	0.35%
Alimtiq Investment Group	0.076	0.004	5.98%	0.42	NM	12.52	78	0.0%	-35.4%	0.04	0.54	-1.0%	-0.1%	0.142	0.069	0.17%
Commercial Facilities	0.175	0.002	1.16%	0.56	6.41	8.67	89	0.0%	-15.0%	0.09	0.51	8.8%	5.0%	0.228	0.165	0.19%
Aayan Leasing and Investment	0.115	0.004	3.60%	0.84	11.38	0.00	76	0.0%	-30.5%	0.90	7.70	7.7%	5.8%	0.204	0.104	0.17%
Kuwait Investment	0.135	0.009	7.14%	0.61	7.30	19.84	74	0.0%	-52.0%	0.90	6.72	8.1%	4.6%	0.317	0.113	0.16%
Noor Financial Investment	0.178	0.002	1.14%	1.09	4.92	2.73	91	-1.1%	-30.0%	0.11	0.60	22.7%	16.0%	0.319	0.167	0.20%
Arzan Financial Group for Financing and Investmei	0.127	-0.003	-2.31%	0.87	8.16	1.86	102	0.0%	-18.4%	0.09	0.74	11.3%	8.2%	0.180	0.109	0.22%
Kuwait Financial Centre	0.117	0.003	2.63%	0.56	8.62	8.35	59	0.0%	-32.1%	0.03	0.26	6.9%	4.0%	0.197	0.104	0.13%
Gulf Investment House	0.401	-0.002	-0.50%	3.84	NM	0.00	163	0.0%	33.7%	0.03	0.07	-3.0%	-2.0%	0.410	0.217	0.35%
Arabi Group Holdings	0.258	0.006	2.38%	1.50	NM	0.00	43	0.0%	-11.3%	0.25	0.96	-29.0%	-4.0%	0.499	0.135	0.09%
Kuwait and Middle East Financial Investment	0.115	0.000	0.00%	1.00	13.39	6.09	25	0.0%	-23.3%	0.00	0.00	7.5%	5.2%	0.175	0.110	0.06%
Privatization Holding	0.036	0.002	6.87%	0.28	NM	0.00	22	0.0%	-34.7%	0.05	1.28	-7.1%	-5.5%	0.070	0.033	0.05%
Asiya Capital Investments	0.042	0.003	8.01%	0.35	2.14	0.00	32	0.0%	-19.6%	0.09	2.21	17.9%	17.6%	0.071	0.039	0.07%
Umm Al Qaiwain General Investment Co	0.093	0.000	0.00%	0.57	4.97	5.38	34	0.0%	6.7%	0.00	0.00	12.0%	10.0%	0.108	0.075	0.07%
Securities House	0.056	0.002	4.25%	0.54	9.25	0.00	24	-1.2%	-42.9%	0.10	1.84	5.8%	5.0%	0.115	0.052	0.05%
Kamco Investment	0.098	0.005	5.48%	0.51	3.68	10.75	34	0.0%	-24.0%	0.09	0.93	14.5%	6.9%	0.167	0.089	0.07%
First Investment	0.077	0.004	5.19%	0.64	104.57	0.00	34	0.0%	-8.6%	0.13	1.71	0.6%	0.7%	0.104	0.068	0.07%
Inovest BSC Public	0.086	0.011	14.40%	0.00	NM	0.00	25	0.0%	-27.3%	0.11	1.35	2.7%	1.7%	0.189	0.070	0.06%
Coast Investment and Development	0.075	0.002	2.74%	0.72	9.99	6.85	35	0.0%	-28.6%	0.01	0.18	7.2%	6.8%	0.127	0.071	0.08%
Al Madar Investment	0.101	0.000	0.00%	0.95	59.06	0.00	21	0.0%	-15.1%	0.02	0.16	1.6%	1.7%	0.128	0.083	0.05%
Bayan Investment	0.035	0.000	0.00%	0.31	NM	0.00	13	0.0%	-28.8%	0.00	0.00	-0.5%	-0.6%	0.060	0.031	0.03%
Al Manar Financing and Leasing	0.051	-0.003	-4.85%	0.53	17.46	0.00	13	0.0%	-18.2%	0.00	0.01	2.9%	2.3%	0.079	0.049	0.03%
Manazel Holding	0.029	0.002	7.38%	0.59	9.28	0.00	13	0.0%	-43.2%	0.04	1.26	6.2%	2.0%	0.060	0.025	0.03%
Kuwait Finance and Investment	0.063	0.001	1.61%	0.46	26.96	0.00	19	0.0%	-27.4%	0.00	0.00	1.7%	1.6%	0.104	0.058	0.04%
National International Holding	0.104	0.004	4.00%	0.58	7.47	4.85	23	0.0%	-29.5%	0.06	0.61	7.6%	5.3%	0.174	0.091	0.05%
Osoul Investment	0.071	0.004	5.22%	0.61	NM	15.80	9	0.0%	-13.7%	0.00	0.03	-4.4%	-4.0%	0.118	0.062	0.02%
UniCap Investment and Finance	0.054	-0.004	-6.59%	0.64	67.88	0.00	12	0.0%	-21.3%	0.02	0.40	1.9%	0.2%	0.097	0.051	0.03%
Amar Finance and Leasing	0.064	0.000	0.00%	0.59	3.45	0.00	12	0.0%	-2.7%	0.00	0.00	18.6%	17.3%	0.097	0.057	0.03%
Gulf North Africa Holding	0.133	0.004	3.10%	1.72	59.40	0.00	20	0.0%	54.5%	0.22	1.64	3.0%	2.4%	0.141	0.057	0.04%
International Financial Advisors	0.093	0.003	3.57%	0.58	36.02	0.00	23	0.0%	-17.8%	0.01	0.09	1.9%	0.7%	0.129	0.082	0.05%
Credit Rating and Collection	0.017	0.000	0.00%	0.57	NM	0.00	3	0.0%	-59.0%	0.00	0.01	-0.4%	-0.3%	0.069	0.016	0.01%
Ekttitab Holding	0.012	0.001	9.43%	0.34	NM	0.00	4	0.0%	-45.5%	0.03	2.43	-16.8%	-12.9%	0.024	0.009	0.01%
Kuwait Syrian Holding Co	0.037	0.001	3.10%	0.35	5.73	0.00	6	0.0%	-14.5%	0.00	0.02	8.7%	6.2%	0.060	0.026	0.01%
Warba Capital Holding	0.099	-0.001	-0.51%	1.10	NM	0.00	10	0.0%	14.5%	0.00	0.00	-0.8%	-0.7%	0.140	0.070	0.02%
National Consumer Holding	0.113	0.008	7.62%	4.76	NM	0.00	34	0.0%	-5.8%	4.90	43.57	-8.0%	-7.5%	0.191	0.097	0.07%
Al Deera Holding	0.160	-0.004	-2.44%	1.10	8.26	0.00	15	0.0%	-20.0%	0.00	0.02	12.5%	6.5%	0.200	0.145	0.03%
AL Safat Investment	0.112	0.008	7.69%	1.33	NM	0.00	32	0.0%	-8.1%	0.92	8.29	-1.8%	-1.6%	0.270	0.099	0.07%
Gulf Franchising Holding	0.080	-0.003	-3.50%	1.63	NM	0.00	3	0.0%	-16.6%	0.00	0.00	-5.7%	-1.6%	0.148	0.050	0.01%
Total Financial Services - 44 Companies							3,626			16.50	132.59					7.89%

DAILY MARKET COVERAGE REPORT

NIC MENA SECURITIES - RESEARCH AND STUDIES DEP

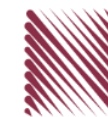


Health Care	Price			Valuation Multiples			MKT Cap	Price Performance		Trading Indicators		ROE	ROA	52 Week (KD)		MKT Cap
	Company	Close (KD)	Day Δ	Day % Δ	PBV(X)	PE(X)		DY%	Mn KD	MTD(%)	YTD (%)			Value (Mn KD)	(Mn Shrs)	
Al-Maidan Clinic for Oral Health Services	0.569	0.000	0.00%	2.51	13.91	0.00	142	0.0%	-54.1%	0.00	0.00	19.4%	12.5%	1.260	0.500	0.31%
Advanced Technology	0.520	0.000	0.00%	1.16	11.23	2.88	78	0.0%	0.4%	0.00	0.00	10.7%	2.1%	0.595	0.450	0.17%
Yiaco Medical	0.450	0.000	0.00%	43.51	NM	0.00	8	0.0%	2.7%	0.00	0.00	-161.7%	-4.7%	0.480	0.399	0.02%
Total Health Care - 3 Companies							228			0.00	0.00					0.50%

Industrials	Price			Valuation Multiples			MKT Cap	Price Performance		Trading Indicators		ROE	ROA	52 Week (KD)		MKT Cap
	Company	Close (KD)	Day Δ	Day % Δ	PBV(X)	PE(X)		DY%	Mn KD	MTD(%)	YTD (%)			Value (Mn KD)	(Mn Shrs)	
Agility Public Warehousing	0.700	0.031	4.63%	1.14	51.38	2.49	1,768	0.0%	-11.1%	10.45	14.89	2.7%	2.2%	1.062	0.634	3.85%
Human Soft Holding	3.300	0.035	1.07%	3.61	7.54	12.25	401	-0.1%	2.4%	0.97	0.29	48.7%	39.9%	3.704	3.006	0.87%
Alafco Aviation Lease and Finance	0.174	0.003	1.75%	0.63	NM	0.00	166	0.0%	-20.2%	0.06	0.34	-15.9%	-3.4%	0.256	0.167	0.36%
Kuwait Cement	0.209	0.006	2.96%	0.74	NM	2.46	149	0.0%	-9.5%	0.07	0.32	-1.1%	-0.7%	0.295	0.198	0.32%
Gulf Cable and Electrical Industries	1.112	0.105	10.43%	0.93	9.34	5.96	231	0.0%	27.7%	0.66	0.61	11.0%	9.0%	1.850	0.826	0.50%
Integrated Holding	0.362	0.004	1.12%	1.48	27.37	2.79	92	-4.7%	-2.2%	0.23	0.62	5.4%	3.4%	0.478	0.351	0.20%
Kuwait Portland Cement	0.795	0.015	1.92%	1.09	16.32	8.97	80	0.0%	-18.9%	0.05	0.06	6.8%	5.3%	1.240	0.755	0.17%
Educational Holding Group	3.000	0.110	3.81%	4.91	10.98	18.44	63	0.0%	-25.0%	0.00	0.00	30.0%	17.2%	5.073	2.744	0.14%
United Projects for Aviation Services	0.232	0.007	3.11%	0.82	80.36	0.00	88	0.0%	-6.5%	0.00	0.00	1.0%	0.6%	0.318	0.182	0.19%
Heavy Engineering Industries and Shipbuilding	0.637	0.022	3.58%	1.65	20.32	3.25	115	0.0%	25.1%	0.46	0.71	8.2%	3.2%	0.960	0.442	0.25%
National Industries	0.189	0.000	0.00%	0.76	11.02	5.29	66	0.0%	-2.1%	0.00	0.00	6.8%	5.1%	0.260	0.181	0.14%
ACICO Industries	0.085	0.003	3.17%	0.37	NM	0.00	28	0.0%	-39.1%	0.11	1.28	-1.9%	-0.5%	0.208	0.076	0.06%
Kuwait Company for Process Plant Construction a	0.301	0.001	0.33%	1.21	19.44	8.25	36	0.0%	-36.5%	0.03	0.11	6.1%	3.5%	0.527	0.286	0.08%
Ras Al Khaimah for White Cement and Constructi	0.140	-0.007	-4.76%	1.24	27.65	5.64	70	0.0%	11.1%	0.00	0.01	4.6%	3.7%	0.175	0.086	0.15%
Combined Group Contracting	0.389	0.006	1.57%	1.42	5.87	6.53	67	0.0%	9.9%	0.12	0.31	26.3%	5.8%	0.500	0.308	0.14%
Kuwait and Gulf Link Transport	0.059	0.003	5.00%	0.33	3.02	0.00	16	0.0%	-13.8%	0.02	0.36	11.6%	2.6%	0.106	0.051	0.04%
Shuaiba Industrial	0.160	0.003	1.91%	0.86	13.06	7.64	16	0.0%	-28.9%	0.01	0.07	6.6%	5.4%	0.310	0.137	0.03%
National Cleaning	0.033	-0.002	-4.57%	0.28	NM	0.00	8	0.0%	-41.3%	0.00	0.02	-13.9%	-4.1%	0.080	0.031	0.02%
Fujairah Cement Industries	0.039	0.002	5.07%	0.20	NM	0.00	14	0.0%	-27.0%	0.00	0.00	-12.7%	-6.3%	0.069	0.028	0.03%
Mubarrad Holding	0.077	0.002	2.67%	0.59	6.35	6.67	13	0.0%	-30.0%	0.01	0.18	9.3%	8.2%	0.130	0.071	0.03%
Specialities Group Holding	0.089	0.005	5.95%	0.45	9.13	8.09	14	0.0%	-28.4%	0.12	1.39	5.0%	3.6%	0.164	0.076	0.03%
Salbookh Trading	0.019	0.000	0.54%	0.55	NM	0.00	2	-1.6%	-57.4%	0.00	0.12	-51.7%	-28.6%	0.072	0.017	0.00%
Metal and Recycling	0.071	-0.003	-4.32%	0.96	NM	0.00	6	0.0%	-25.5%	0.00	0.00	-12.0%	-2.0%	0.136	0.068	0.01%
Equipment Holding	0.033	0.000	-0.30%	0.53	NM	0.00	3	0.0%	-39.6%	0.00	0.07	-11.1%	-3.2%	0.079	0.030	0.01%
Jassim Transport & Stevedoring	0.329	0.001	0.30%	1.11	14.30	4.88	49	0.0%	-19.2%	0.01	0.12	8.0%	6.3%	0.450	0.307	0.11%
Total Industrials - 24 Companies							3,560			13.39	21.88					7.75%

DAILY MARKET COVERAGE REPORT

NIC MENA SECURITIES - RESEARCH AND STUDIES DEP



Insurance	Price			Valuation Multiples			MKT Cap	Price Performance		Trading Indicators		ROE	ROA	52 Week (KD)		MKT Cap
	Company	Close (KD)	Day Δ	Day % Δ	PBV(X)	PE(X)		DY%	Mn KD	MTD(%)	YTD (%)			Value (Mn KD)	(Mn Shrs)	
Gulf Insurance Group	0.995	0.000	0.00%	1.16	4.26	10.65	282	0.0%	-7.0%	0.00	0.00	28.6%	5.5%	1.200	0.866	0.61%
Al Ahleia Insurance	0.510	0.004	0.79%	0.84	6.98	6.92	111	0.0%	1.0%	0.00	0.00	12.5%	4.4%	0.612	0.453	0.24%
Kuwait Insurance	0.447	0.000	0.00%	0.67	6.93	7.38	83	0.0%	15.5%	0.00	0.01	10.4%	6.1%	0.497	0.379	0.18%
Kuwait Reinsurance	0.295	0.000	0.00%	1.07	10.42	1.55	70	0.0%	16.9%	0.00	0.00	10.8%	3.4%	0.373	0.217	0.15%
Bahrain Kuwait Insurance	0.191	0.000	0.00%	1.33	11.98	8.44	29	0.0%	0.0%	0.00	0.00	11.0%	2.1%	0.191	0.191	0.06%
Warba Insurance and Reinsurance	0.131	0.006	4.80%	0.53	8.69	8.00	22	0.0%	-17.6%	0.01	0.11	6.2%	2.1%	0.176	0.119	0.05%
First Takaful Insurance	0.048	0.000	0.00%	0.63	296.88	0.00	5	0.0%	-5.0%	0.00	0.00	0.2%	0.1%	0.081	0.034	0.01%
Wethaq Takaful Insurance	0.040	0.001	3.60%	0.35	20.37	0.00	4	0.0%	-20.8%	0.01	0.19	1.7%	1.7%	0.102	0.024	0.01%
Total Insurance - 8 Companies							606			0.03	0.31					1.32%

Energy	Price			Valuation Multiples			MKT Cap	Price Performance		Trading Indicators		ROE	ROA	52 Week (KD)		MKT Cap
	Company	Close (KD)	Day Δ	Day % Δ	PBV(X)	PE(X)		DY%	Mn KD	MTD(%)	YTD (%)			Value (Mn KD)	(Mn Shrs)	
National Petroleum Services	0.767	0.017	2.27%	1.89	13.44	4.67	74	0.0%	-6.5%	0.00	0.00	14.5%	11.6%	0.880	0.625	0.16%
Independent Petroleum Group	0.473	0.000	0.00%	0.87	15.84	6.34	86	0.0%	-19.6%	0.00	0.00	5.5%	1.0%	0.614	0.368	0.19%
Burgan for Well Drilling Trading and Maintenance	0.120	0.005	4.35%	0.39	9.03	2.53	29	0.0%	-16.1%	0.04	0.34	4.4%	1.4%	0.172	0.100	0.06%
Energy House Holding	0.021	0.001	2.96%	0.73	NM	0.00	16	0.0%	-66.9%	0.00	0.07	-1.4%	-2.5%	0.086	0.019	0.03%
Gulf Petroleum Investment	0.017	0.000	2.47%	0.23	NM	0.00	8	0.0%	-32.2%	0.04	2.20	-4.0%	-2.6%	0.031	0.013	0.02%
Senegy Holding	0.040	0.000	-0.75%	0.80	47.50	0.00	8	0.0%	-19.2%	0.03	0.89	1.7%	1.4%	0.063	0.036	0.02%
Total Energy - 6 Companies							220			0.11	3.49					0.48%

DAILY MARKET COVERAGE REPORT

NIC MENA SECURITIES - RESEARCH AND STUDIES DEP



Real Estate	Price		Valuation Multiples					MKT Cap	Performance		Trading Indicators		ROE	ROA	2 Week (KD)		MKT Cap
Company	Close (KD)	Day Δ	Day % Δ	PBV(X)	PE(X)	DY%	Mn KD	MTD(%)	YTD (%)	Value (Mn KD)	(Mn Shrs)	(%)	(%)	High	Low	%	
Mabane Co.	0.870	0.014	1.64%	1.95	18.11	1.54	1,080	0.0%	16.3%	0.69	0.80	11.2%	5.4%	0.910	0.715	2.35%	
Salhia Real Estate	0.455	0.013	2.94%	1.47	18.89	3.23	234	0.0%	-9.7%	0.40	0.90	7.9%	3.2%	0.578	0.428	0.51%	
Commercial Real Estate	0.103	0.006	6.19%	0.59	9.97	5.15	181	0.0%	-17.6%	0.28	2.82	6.2%	3.3%	0.140	0.094	0.39%	
National Real Estate	0.139	0.006	4.51%	0.74	1.20	0.00	258	0.0%	-24.5%	0.70	5.04	64.5%	38.6%	0.212	0.125	0.56%	
Tamdeen Real Estate	0.301	0.000	0.00%	0.58	6.93	3.32	121	0.0%	-11.2%	0.00	0.00	9.2%	3.9%	0.375	0.296	0.26%	
Kuwait Real Estate	0.105	0.004	4.17%	0.74	12.28	2.89	97	0.0%	-39.6%	0.90	8.57	6.0%	2.5%	0.187	0.097	0.21%	
United Real Estate	0.073	-0.005	-6.69%	0.49	242.81	0.00	78	0.0%	-3.8%	0.05	0.62	0.2%	-0.1%	0.121	0.064	0.17%	
First Dubai for Real Estate Development	0.046	0.001	1.55%	0.44	30.40	0.00	34	0.0%	-56.2%	0.06	1.24	1.5%	1.2%	0.120	0.044	0.07%	
Al Mazaya Holding	0.046	0.002	4.06%	0.45	40.27	0.00	29	0.0%	-39.7%	0.12	2.66	1.1%	0.6%	0.089	0.043	0.06%	
Ajial Real Estate Entertainment	0.282	0.012	4.44%	0.40	16.66	1.85	55	0.0%	-7.2%	0.00	0.00	2.4%	2.0%	0.345	0.260	0.12%	
Injazzat Real Estate Development	0.080	-0.001	-1.11%	0.48	6.88	6.18	27	0.0%	-20.0%	0.04	0.48	7.0%	3.6%	0.114	0.070	0.06%	
Munshaat Real Estate Projects	0.067	0.000	0.00%	2.05	12.57	0.00	21	0.0%	-7.0%	0.00	0.00	17.4%	1.5%	0.081	0.052	0.05%	
Aayan Real Estate	0.063	0.004	5.91%	0.42	56.92	0.00	26	0.0%	-29.2%	0.02	0.37	0.7%	1.4%	0.105	0.056	0.06%	
Al Argan International Real Estate	0.086	0.003	3.87%	0.27	30.29	0.00	22	0.0%	-26.6%	0.01	0.10	0.9%	0.3%	0.144	0.073	0.05%	
Al-Enmaa Real Estate	0.065	-0.002	-2.69%	0.73	NM	0.00	29	0.0%	-12.8%	0.09	1.38	-5.9%	NM	0.091	0.056	0.06%	
Arkan Al Kuwait Real Estate	0.125	0.000	0.00%	0.88	12.18	4.80	31	0.0%	0.8%	0.00	0.02	7.4%	2.3%	0.152	0.113	0.07%	
Kuwait Business Town Real Estate	0.054	0.004	7.63%	0.62	13.87	0.00	31	0.0%	-34.2%	0.13	2.38	3.8%	2.8%	0.100	0.047	0.07%	
Dalqan Real Estate	0.217	0.004	1.88%	1.91	197.22	0.00	13	0.0%	0.0%	0.04	0.18	1.0%	1.0%	0.285	0.195	0.03%	
Sokouk Holding	0.025	-0.001	-1.96%	0.59	NM	0.00	14	0.0%	-23.3%	0.00	0.11	-2.9%	-1.7%	0.038	0.020	0.03%	
Tijara and Realestate Investment	0.055	0.003	4.77%	0.48	8.02	5.73	20	15.6%	-10.1%	0.05	0.89	6.0%	3.2%	0.089	0.044	0.04%	
Al-Arabiya Real Estate	0.032	-0.001	-3.05%	0.39	NM	0.00	16	0.0%	-24.1%	0.06	1.78	-23.1%	-7.3%	0.052	0.026	0.03%	
Aqar Real Estate Investments	0.055	-0.005	-8.09%	0.49	18.95	5.62	13	0.0%	-30.8%	0.00	0.02	2.6%	2.1%	0.098	0.052	0.03%	
Mashaer Holding	0.055	0.000	-0.18%	0.65	NM	0.00	10	0.0%	-21.7%	0.00	0.09	-6.5%	-3.2%	0.086	0.050	0.02%	
Dar Al Thuraya Real Estate	0.170	0.000	0.00%	1.47	25.07	0.00	25	0.0%	61.9%	0.00	0.00	6.0%	5.3%	0.172	0.090	0.05%	
Osos Holding Group	0.098	0.004	4.26%	0.82	7.48	10.64	10	0.0%	-6.7%	0.00	0.01	11.2%	7.1%	0.147	0.094	0.02%	
Al Massaleh Real Estate	0.042	0.000	-0.24%	0.69	NM	0.00	10	0.0%	-20.3%	0.00	0.00	-15.4%	-3.2%	0.060	0.036	0.02%	
Kuwait Remal Real Estate	0.013	0.001	5.93%	1.51	NM	0.00	4	0.0%	-34.6%	0.00	0.20	-110.3%	-12.4%	0.024	0.010	0.01%	
Kuwait Real Estate Holding	0.035	-0.002	-4.86%	0.69	13.41	0.00	7	0.0%	-33.3%	0.00	0.01	5.1%	1.7%	0.059	0.032	0.01%	
Taameer Real Estate Investment	0.021	0.002	7.89%	0.30	NM	0.00	5	0.0%	-50.4%	0.06	2.95	-6.5%	-4.9%	0.054	0.018	0.01%	
Sanam Real Estate	0.059	0.000	-0.34%	0.78	26.34	0.00	7	0.0%	-25.5%	0.00	0.00	2.9%	2.8%	0.100	0.053	0.02%	
Mena Real Estate	0.031	0.000	-0.32%	0.28	NM	0.00	4	0.0%	-38.0%	0.03	1.10	-6.8%	-5.4%	0.105	0.030	0.01%	
Al Masaken International Real Estate Developmen	0.031	0.001	3.69%	0.48	NM	0.00	3	0.0%	-29.6%	0.00	0.04	-1.1%	-0.4%	0.069	0.028	0.01%	
Real Estate Trade Centers	0.054	-0.003	-5.57%	0.32	24.06	0.00	8	-4.6%	-22.4%	0.01	0.18	1.3%	1.1%	0.123	0.043	0.02%	
Land United Real Estate	0.068	0.000	0.00%	0.60	NM	0.00	10	0.0%	-27.6%	0.00	0.00	-4.8%	-1.5%	0.144	0.052	0.02%	
Total Real Estate - 34 Companies							2,533			3.75	34.92					5.51%	

DAILY MARKET COVERAGE REPORT

NIC MENA SECURITIES - RESEARCH AND STUDIES DEP



	Close (KD)	Day Δ	Day % Δ	PBV(X)	PE(X)	DY%	Mn KD	MTD(%)	YTD (%)	Value (Mn KD)	(Mn Shrs)	(%)	(%)	High	Low	%
Automated Systems	0.081	-0.001	-0.61%	0.72	NM	0.00	8	0.0%	-13.9%	0.00	0.01	-3.4%	-3.0%	0.116	0.074	0.02%
Total Technology - 1 Companies				0.72	NM	0.0%	8			0.00	0.01	-3.40%	-2.96%			0.02%

Telecom	Price			Valuation Multiples			MKT Cap	Price Performance		Trading Indicators		ROE	ROA	52 Week (KD)		MKT Cap
Company	Close (KD)	Day Δ	Day % Δ	PBV(X)	PE(X)	DY%	Mn KD	MTD(%)	YTD (%)	Value (Mn KD)	(Mn Shrs)	(%)	(%)	High	Low	%
Mobile Telecommunications	0.594	0.007	1.19%	2.14	13.87	5.62	2,570	-1.5%	-0.2%	3.18	5.37	15.6%	4.3%	0.698	0.564	5.59%
Kuwait Telecommunications	0.562	0.017	3.12%	2.45	12.53	5.50	561	0.0%	31.5%	0.23	0.41	20.1%	10.9%	1.189	0.418	1.22%
National Mobile Telecommunications	1.000	0.100	11.11%	0.86	13.63	3.89	501	0.0%	60.3%	0.11	0.11	6.2%	3.6%	1.280	0.615	1.09%
AAN Digital Services	0.016	0.000	0.00%	0.60	NM	0.00	14	0.0%	-2.4%	0.00	0.00	NM	NM	0.020	0.015	0.03%
Hayat Communications	0.061	0.001	1.84%	0.48	NM	0.00	5	0.0%	-42.5%	0.00	0.01	-0.7%	-0.3%	0.124	0.052	0.01%
Telecom - 5 Companies							3,652			3.52	5.91					7.95%

Utilities	Price			Valuation Multiples			MKT Cap	Price Performance		Trading Indicators		ROE	ROA	52 Week (KD)		MKT Cap
Company	Close (KD)	Day Δ	Day % Δ	PBV(X)	PE(X)	DY%	Mn KD	MTD(%)	YTD (%)	Value (Mn KD)	(Mn Shrs)	(%)	(%)	High	Low	%
Shamal Az-Zour Al-Oula Power & Water	0.193	0.001	0.52%	2.16	14.70	9.38	212	0.0%	-15.4%	0.15	0.78	19.1%	2.9%	0.247	0.190	0.46%
Total Utilities - 1 Companies							212			0.15	0.78					0.46%

Total Market 157 Companies				1.96	30.86	4.12	45,939			77.61	295.84					100%
-----------------------------------	--	--	--	-------------	--------------	-------------	---------------	--	--	--------------	---------------	--	--	--	--	-------------

End of Report

The information contained in this document is proprietary to NIC and is for use only by the persons to whom it is issued. This document is confidential and may not be distributed either in part or in whole without the express agreement of NIC. It is intended solely for the use of the individual or entity to whom it is addressed and others authorized to receive it.

Note : ROE and ROA is calculated based on LFY net profit & shareholders' equity and LFY Operating Profits & Total Assets

Sources : National Investments Company Research and Studies Departments, Boursa, Refinitiv.



شركة الاستثمار الوطنية
NATIONAL INVESTMENTS COMPANY

Sharq, Al Mutanabi Street, Khaleejia Tower | P.O. Box 25667, Safat 13117, Kuwait

T.: +965 2226 6666 | Fax: +965 2226 6793 | www.nic.com.kw